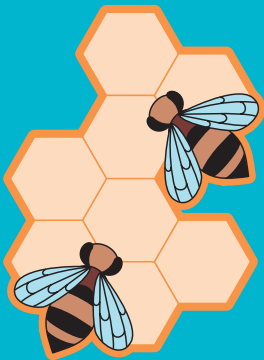




A3+ monochrome  
laser printer

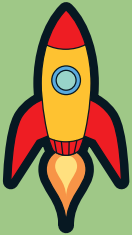


**hp** LaserJet 5000 series



networkable

## professional solution



### hp LaserJet 5000 series A3+ monochrome laser printer

The HP LaserJet 5000 Series are designed for CAD, desktop publishing, finance and general office users that require a networkable, fast, high-quality black and white printer for media up to A3+ size (11 x 17").

#### performance

- 16 page-per-minute (ppm) engine
- instant-on fuser prints the first page of a job in 13 seconds even from powersave mode
- hp reliability means your printer will consistently deliver great results

#### high-quality output

- hp ProRes 1200 and hp FastRes 1200 for 1200-dpi printing
- hp UltraPrecise toner provides enhanced grayscale, photo-like quality, and consistent results
- prints full-bleed images on full media range

#### versatility

- standard HP PCL 6, HP PCL 5e, and postscript level 2 emulation with automatic language switching to ensure compatibility with both pc and macintosh files
- print on a broad range of media size (3 x 5 to 11 x 17") and types
- choose a duplex configuration to print on both sides of the paper
- hp jetsend enables device-to-device communication without the pc

#### superior networking

- hp jetdirect EIO internal print servers support for Fast Ethernet, Ethernet 10/100Base-TX, Ethernet 10Base-T, Ethernet 10Base2, LocalTalk and Token Ring
- hp web jetadmin provides easy network printer installation, configuration, and remote management and diagnostics from your desktop browser
- hp transmit once reduces network traffic and delivers a fast return-to-application time

#### customised solutions

- select from an expanded set of standard models
- expand a configuration with additional options to match specific office needs
- utilise a variety of HP media to optimise your business outputs
- incorporate HP services and support to get the most from your printing investments

# hp LaserJet 5000 series

(hp LaserJet 5000gn shown)



## optional accessories

### auto-duplex unit

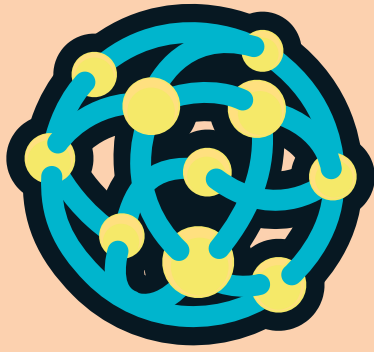
- enables printing on both sides of a page
- saves you money by reducing paper usage

### EIO hard disk drive

- enables Raster Image Processor (RIP) once for faster multiple original printing, reduced network traffic and faster return-to-application time

### 250/500-sheet paper trays

- increases input capacity to a maximum of 1,100 sheets
- allows printing on multiple media types directly from different trays
- improves productivity by increasing paper capacity and reducing restocking of trays



### **hp web jetadmin printer management software**

- simplifies remote installation, monitoring and troubleshooting
- features advanced auto-discovery, multiple device configuration, page count tracking, grouping, mapping and e-mail alerts
- supports the following network server environments: Windows 2000, Macintosh, Novell Netware, Windows NT, Unix (HP-UX and Solaris) and Linux

## **selecting the right hp LaserJet 5000 printer**



**hp LaserJet 5000**  
general office printer

- 4 MB memory
- 100/250-sheet paper trays
- 3 open DIMM memory slots



**hp LaserJet 5000n**  
network-ready office printer

- 12 MB memory
- 100/250/500-sheet paper trays
- 2 open DIMM memory slots
- hp jetdirect EIO 10/100Base-TX internal print server



**hp LaserJet 5000gn**  
network-ready graphics printer

- 12 MB memory
- 100/250/500-sheet paper trays
- 2 open DIMM memory slots
- hp jetdirect EIO 10/100Base-TX internal print server
- >3 GB EIO hard disk drive
- RIP Once technology

**technical specifications**  
**hp LaserJet 5000 series**

**hp LaserJet 5000 series**

- 16 ppm
- 100-MHz RISC processor
- Instant-on fuser
- HP FastRes 1200 and HP ProRes 1200
- HP UltraPrecise toner cartridge (10,000 pages)
- HP PCL 6, HP PCL 5e, and PostScript Level 2 emulation
- HP JetSend enabled
- Internal EIO expansion slots
- Memory Enhancement technology (MEt)
- Resolution Enhancement technology (REt)
- Memory expansion up to 164 MB
- Up to 65,000 pages per month duty cycle

**resolution**

- HP FastRes 1200 (1200dpi quality) at engine speed (PCL 6)
- HP ProRes 1200 (1200 x 1200 dpi) at half engine speed (PCL 6 & PostScript)
- 600 dpi and 300 dpi
- Optimised halftoning with up to 220 levels of gray
- Prints up to 1/5" from edge of page (full-bleed printing on oversized paper by trimming)

**connectivity and network support**

direct connect

- Bidirectional IEEE-1284 compliant parallel interface
- RS-232 serial (9-pin) interface

**network protocol support**

IPX/SPX

- Novell NetWare v3.11, 3.12, 4.x, 5.0, 5.1
- Novell NDS and NDPS
- Microsoft® Windows® 95/98 Networking
- Microsoft Windows NT® v3.51, 4.0, Windows 2000

EtherTalk

- Mac OS 7.1 or greater (except J3112A Token Ring)
- AppleTalk and Apple LocalTalk (system 7)

DLC/LLC

- IBM OS/2 Warp v3.0, 4.0
- Microsoft Windows NT v3.51, 4.0
- Artisoft LANtastic v7.0

TCP/IP

- HP-UX v9.x, 10.x, 11.x
- SunOS v4.1.3, 4.1.4, 7
- Solaris v2.3, 2.4, 2.5x, 2.6, 7
- IBM OS/2 Warp v3.0, 4.0
- IBM AIX v3.2.5 and greater
- Microsoft Windows NT® v3.51, 4.0, Windows 2000
- Microsoft® Windows® 95/98 Networking
- SCO UNIX v386, v3.2, 4.2, 5.0
- Ipd
- MPE-iX v5.5
- Mac OS v7.6.x, 8.1 or greater
- Linux Redhat v5.2 and SUSE v6.2

**paper handling**

- Up to 4 input trays for a maximum capacity of 1,100 sheets
- Paper input-level indicators
- "Output full" sensor for face-down bin
- Optional duplexing for printing on both sides

100-sheet paper tray (standard)

- Supports envelopes, labels, transparencies and special media sizes from 3 x 5 to 12.28 x 18.5"
- 16 to 53 lb (60 to 199 g/m²) through the face-up output bin
- 16 to 34 lb (60 to 128 g/m²) through the face-down output bin
- envelopes 16 to 28 lb (60 to 105 g/m²)—maximum capacity is 10

250-sheet paper tray (standard and optional)

- Supports letter, legal, 11 x 17", executive, A3, A4, A5, B4, and B5 paper sizes
- 16 to 28 lb (60 to 105 g/m²)

500-sheet paper tray (standard and optional)

- Supports letter, legal, 11 x 17", executive, A3, A4, A5, B4, B5 and custom media sizes 8.27 x 5.85 to 11.69 x 17" (210 x 148 to 297 x 432 mm)
- 16 to 28 lb (60 to 105 g/m²)

auto-duplex unit

- Supports 16 to 28 lb (60 to 105 g/m²)

paper sizes

- A5: 5.8 x 8.27" (148 x 210 mm)  
print: 5.5 x 7.94" (140 x 202 mm)
- B5 (JIS): 7.2 x 10" (182 x 257 mm)  
print: 6.84 x 9.79" (174 x 249 mm)
- A4: 8.27 x 11.7" (210 x 297 mm)  
print: 7.94 x 11.36" (202 x 289 mm)
- B4 (JIS): 10.1 x 14.3" (257 x 364 mm)  
print: 9.79 x 14" (249 x 356 mm)

- A3: 11.69 x 16.54" (297 x 420 mm)  
print: 11.36 x 16.21" (289 x 412 mm)
- Executive: 7.25 x 10.5" (184 x 267 mm)  
print: 6.92 x 10.17" (176 x 259 mm)
- Letter: 8.5 x 11" (216 x 279 mm)  
print: 8.17 x 10.67" (208 x 271 mm)
- Legal: 8.5 x 14" (216 x 356 mm)  
print: 8.17 x 13.67" (208 x 347 mm)
- Tabloid: 11 x 17" (279 x 432 mm)  
print: 10.67 x 16.67" (271 x 423 mm)
- Minimum: 3 x 5" (76 x 127 mm)  
print: 2.67 x 4.67" (68 x 119 mm)
- Maximum: 12.28 x 18.5" (312 x 470 mm)  
print: 11.93 x 18.11" (303 x 460 mm)
- Optional duplexer minimum: 5.8 x 8.3" (148 x 210 mm)  
print: 5.5 x 7.94" (140 x 202 mm)
- Optional duplexer maximum: 11 x 17" (279 x 432 mm)  
print: 10.67 x 16.67" (271 x 423 mm)

envelope sizes

- #10 regular: 9.5 x 4.125" (241 x 105 mm)  
print: 9.27 x 3.93" (235 x 100 mm)
- Monarch: 7.5 x 3.875" (191 x 98 mm)  
print: 7.27 x 3.68" (185 x 93 mm)
- DL: 8.66 x 4.33" (220 x 110 mm)  
print: 8.43 x 4.14" (214 x 105 mm)
- C5: 9.02 x 6.38" (229 x 162 mm)  
print: 8.79 x 6.19" (223 x 157 mm)
- B5: 9.85 x 6.93" (250 x 176 mm)  
print: 9.62 x 6.74" (244 x 171 mm)

**font capabilities**

- 110 scalable TrueType® fonts (80 built-in, 30 via HP FontSmart all PostScript and HP PCL-accessible)
- PostScript Level 2 emulation
- HP FontSmart software provides easy-to-use font management capabilities
- Built-in Intellifont and TrueType rasterisers

**control panel**

- Two-line backlit LCD display and three LEDs
- Buttons: job cancel, go, menu, item, value, select
- Indicators: ready, data, attention
- Control panel can be locked through software
- Messages can be displayed in 17 languages

**environmental ranges**

temperature for printer and toner:

- Operating—10° to 32.5° C (50° to 91° F)
- Storage—0° to 35° C (32° to 95° F)

humidity:

- Operating—20% to 80% RH
- Storage—0% to 95% RH

**acoustics:**

- Operating position—L<sub>wad</sub> <58 dB (A) printing, L<sub>wad</sub> <33 dB standby (per ISO 9296, DIN 45635, T.19)
- Bystander 1m—L<sub>wad</sub> <52 dB (A) printing, L<sub>wad</sub> <28 dB standby (per ISO 7779, DIN 45635, T.19)
- Sound power—0 bels (A) in powersave L<sub>wad</sub> , 6.6 bels (A) printing at 16 ppm, 6.3 bels (A) printing at 8 ppm

**power requirements**

- Source—100 to 127 volts (±10%) or 220 to 240 volts (±10%)
- Printers voltage ranges depend upon the country where purchased
- Frequency—50 or 60 Hz (±2 Hz)

power consumption:

- Printing—365 watts
- Standby—40 watts
- Powersave—27 watts (EPA Energy Star)

minimum circuit capacity:

- 11 amps (100 to 127 volts) or 5 amps (200 to 240 volts)

**product certification**

- UL and cUL listed to UL 1950/CSA 950; complies with IEC 950/EN 60950: meets Class B limits for FCC Part 15 and CISPR 22; product CDRH-certified Class 1 Laser Product (safe for office/EDP use)

**dimensions (w x h x d)**

- HP LaserJet 5000: 485 x 375 x 482 mm (19.1 x 12.8 x 19")
- HP LaserJet 5000n/5000gn: 485 x 475 x 635 mm (19.1 x 18.7 x 25")

**weight**

- HP LaserJet 5000: 46 lb (21 kg)
- HP LaserJet 5000n/5000gn: 71 lb (32 kg)

**warranty**

- Next business day on-site, 2 years

## further information

For more information on the HP LaserJet 5000 Series, visit our Web site at <http://www.hp.com> or [www.hp.com/go/lj5000](http://www.hp.com/go/lj5000) and click on products and services. Here you will find information on products, supplies, and accessories for all your computing needs. HP peripherals, personal computers, supplies, and accessories are available at authorised HP resellers worldwide.

For more information, call your local Hewlett-Packard sales office or your nearest HP authorised dealer:

### hp customer information centre (for product information)

Australia	132347
China	+86 10 6564 5858
Hong Kong	+852 2599 7066
India	+91 11 9628 123 123
Indonesia	+62 21 579 00323
Korea	+82 2 3270 0720
Malaysia	+60 3 2698 1111
New Zealand	+0800 733 547
Philippines	+63 2 636 9888
Singapore	+65 2788100 +1800 2788100 (local toll free calls only)
Taiwan	+886 2 2717 0055
Thailand	+662 353 9000
Vietnam	+848 823 6215

For the following countries, please fax your queries to: +65 275 6707  
• Bangladesh • Brunei • Cambodia • Pakistan • Sri Lanka

### hp customer care centre (for post-sales service)

Australia	+61 3 8877 8000
China	+86 10 6564 5959
Hong Kong	+852 800 96 7729
India	+91 11 682 6035
Indonesia	+62 21 350 3408
Korea	+82 2 3270 0700
Malaysia	+60 3 2695 2566
New Zealand	+64 9 356 6640
Philippines	+63 2 867 3551
Singapore	+65 272 5300
Taiwan	+886 2 2717 0055
Thailand	+662 353 9000
Vietnam	+848 823 4530

for more information on support, visit:

<http://www.hp.com/go/support>

for more information on hp supportpack, visit:

<http://www.asiapac.hp.com/supportpack>

for more information on hp genuine parts, visit:

<http://www.hp.com/go/hpparts>



Energy Star is a U.S. registered service mark of the United States Environmental Protection Agency. As an ENERGY STAR partner, HP has determined that this product meets the guidelines for energy efficiency. Adobe and Adobe PostScript 3 are either registered trademarks or trademarks of Adobe Systems Incorporated in the USA, and other countries. AutoCAD is a U.S. trademark of Autodesk, Inc. Microsoft, Windows, and Windows NT are registered trademarks of Microsoft Corporation in the USA and other countries. PANTONE® is Pantone, Inc.'s check-standard trademark for color. Pentium is a U.S. registered trademark of Intel Corporation. All other brand and product names are trademarks or registered trademarks of their respective companies. The information contained in this document is subject to change without notice. HP makes no warranty of any kind with respect to this information. HP specifically disclaims the implied warranty of merchantability and fitness for a particular purpose. HP shall not be liable for any direct, indirect, incidental, consequential, or other damage alleged in connection with the furnishing or use of this information.

All brands and product names are trademarks or registered trademarks of their respective companies.

All information is subject to change without any prior notice (E.&O.E.).  
For warranties, please check with your local country resellers.

© Copyright Hewlett-Packard Company 2001  
Printed in Singapore M12/2001  
P/N: 5980-8768EEAU

## ordering information

number	description
C4110A	HP LaserJet 5000 general office printer
C4111A	HP LaserJet 5000n network-ready office printer
C4112A	HP LaserJet 5000gn network-ready graphics printer

### hp supportpack options<sup>1</sup>

H5479A/E	HP Support pack—next day onsite (3 years)
H2669E	HP Support pack—next day onsite (5 years)
H4420A/E	Advanced maintenance service—next day (3 years)
H4513A/E	Installation service (1 unit)
H4514A/E	Installation service (2 – 5 units)

### accessories

C4129X	HP UltraPrecise toner cartridge (10,000 pages)
C2985B	>3 GB EIO hard disk drive
C4113A	Auto-duplex unit
C4114A	250-sheet paper tray
C4115A	500-sheet paper tray

### media

HPM1120	HP Multipurpose paper—letter/500 sheets (20 lb)
HPM1720	HP Multipurpose paper—11 x 17"/500 sheets (20 lb)
HPJ1124	HP LaserJet paper—letter/500 sheets (24 lb)
HPJ1724	HP LaserJet paper—11 x 17"/500 sheets (24 lb)
C4179A	HP LaserJet soft gloss paper
92296T	HP LaserJet transparencies

### memory

C4135A	4 MB EDO DIMM
C4136A	8 MB EDO DIMM
C4137A	16 MB EDO DIMM
C7842A	8 MB SDRAM DIMM
C7843A	16 MB SDRAM DIMM
C7845A	32 MB SDRAM DIMM
C7846A	64 MB SDRAM DIMM

### interface and cables

C2951A	Parallel (25-pin male to 36-pin male) 3 m/10' cable for HP Vectra, IBM PC/AT and compatibles
C2932A	Serial (9-pin female to 9-pin male) 3 m/10' cable for HP Vectra
C2933A	Serial (9-pin female to 9-pin male) 3 m/10' cable for IBM PC/AT and compatibles
C2809A	Serial (25-pin female to 9-pin male) cable adapter
92215S	Macintosh serial cable
92215N	Macintosh network

### hp jetdirect EIO internal print servers

J4169A	Fast Ethernet, Ethernet 10/100Base-TX
J3110A	Ethernet 10Base-T
J3111A	Ethernet 10Base-T, 10Base2 and LocalTalk
J3112A	Token Ring

<sup>1</sup>Please check your local hp resellers for availability of other HP Supportpack option

